

Craft Beer Culinary Cruise

On MV Swell

Craft beer, culinary & nature adventure, Gulf Islands, B.C.



Island hopping, beer and food pairing, cultural history, exclusive tastings with brewmasters & wildlife viewing.

Join B.C.'s Craft Beer Culinary Cruise and discover the rich flavours and colourful history of the province's craft beer... while you cruise the Gulf Islands by heritage tug boat.

Arguably as diverse as wine in their flavours, the 50 beers included cover a range from a crisp, cold Swans' Arctic Ale to the chocolate creaminess of Gulf Islands Brewery's Saturna Island Extra Stout.

On this 5-night adventure you'll:

- Have personalized visits, tastings & tours with local brewmasters in the islands.
- Sample local cuisine paired to beer - like a wine tasting but with a different palette.
- Cruise the islands, explore wild beaches, and view wildlife.
- Learn from experts about the area's history and nature.

Highlights include:

- Special tastings with brewmasters, not available to the general public.
- Sampling 50 B.C. craft brews, many award-winners.
- Conversations with expert guide Greg Evans, about brew types, brewing history, food pairing, the "unbuttoned" social history of drinking on Vancouver Island, and more.
- Experiencing the beautiful autumn season in the Islands, with visits to wild beaches and rainforests.
- Wildlife hotspots, including popular sites for porpoises, sea lions and seabirds.
- Personalized service and camaraderie with a small group of guests.
- An extensive resource booklet crammed with tasting notes, history, collectibles and more.





Craft Beer Culinary Cruise



"It was awesome – great food, beer, people & scenery.

What more can you ask for in life? Thanks for everything!"

- Julie Wartell, San Diego
(founder of PubQuest.com)

"We never thought we would learn so much about beer! I especially enjoyed Greg and Drew discussing the intricacies of pairing beer and food."

- John Wilson, Edmonton

2017 Dates & Prices - *Swell*

October 27 - 31, 4 nights, 5 days
Price: Cdn \$2790 (category 1), \$3112 (category 2), \$3576 (category 3)
Depart & Return: Sidney, BC

for cabin category descriptions please refer to the *Swell* ship page enclosed

Maple Leaf Adventures
PO Box 8845, Stn. Central,
Victoria, B.C., V8W 3Z1 Canada

toll free 1-888-599-5323
local 1-250-386-7245



A Classic, Coastal Ship

The *Swell* is a beloved coastal ship that, for over 100 years, has plied the waters of Vancouver Island -- as a towboat for 92 years and then as a passenger carrying vessel.

Travelling aboard her, you are like a special guest as the ship is welcomed at docks in coastal communities. As well as being a piece of coastal history, *Swell* is a well-engineered, beautiful ship -- a work of functional art.

Your Beer Expert: Greg Evans

Historian, beer consultant and raconteur, Greg Evans is known in many circles as a man who knows a lot and makes it fun to learn.

He is a member of the Campaign for Real Ale and past director of several museums. His university master's thesis was on the (colourful) Vancouver Island brewing industry from 1858-1917.



Sample Itinerary: Oct 27-31

This sample itinerary is meant to give you a general overview of the trip. Details may vary in response to weather and good opportunities that arise.

- Day 1 Board *Swell* at Sidney, B.C. Introduction to world of beers, brewing history. Tasting with micro-brewing expert Paul Hadfield. Explore the Gulf Islands. Anchorage
- Day 2 Journey into the Port of Nanaimo for a brewery visit. Private tour, and tasting at Longwood Brew Pub. Cruising Gulf Islands. Discussion about the world of beers, brewing history, and a tasting with dinner.
- Day 3 Off the Beaten Track: Wildlife and Secret Islets. Includes wildlife viewing, cruising, shore walks, optional kayaking. Natural history information. Beer tasting with brew historian and fellow guests. Social history of beer in BC.
- Day 4 Scenic shore walk, Saturna Island. Cruising in Boundary Pass, with possible wildlife viewing. Tour and tastings, Gulf Islands Brewery. Dinner aboard: Salt Spring Island feast.
- Day 5 Breakfast, walk on Russell Island, exploring local history, and farewell. Cruising to Sidney. Disembark, noon, at Sidney.

All meals are prepared with local beer ingredients, and lunch and dinner are paired with complementary brews.



MV Swell



dining salon

A classic tug refit into an expedition yacht

The Swell is an authentic, coastal tugboat. Her small size and ruggedness, combined with our special access permits and knowledgeable and well-connected crew, give you an unparalleled experience.

You have access to sites, phenomena and people you cannot get on larger ships, which are often banned from the special areas we take you. What's more, you have a full ship for just you and a few other guests. The cabins are beautifully and lovingly decorated, but they are not hotel rooms. They are authentic, small boat cabins. This means the beds are non-standard sizes but are comfortable. There are door sills to step over to enter each cabin. This does mean that you need to step aboard without thinking of cabins as hotel rooms, but rather as cozy cabins on a real heritage ship.



galley



top deck lounge w/ hot tub



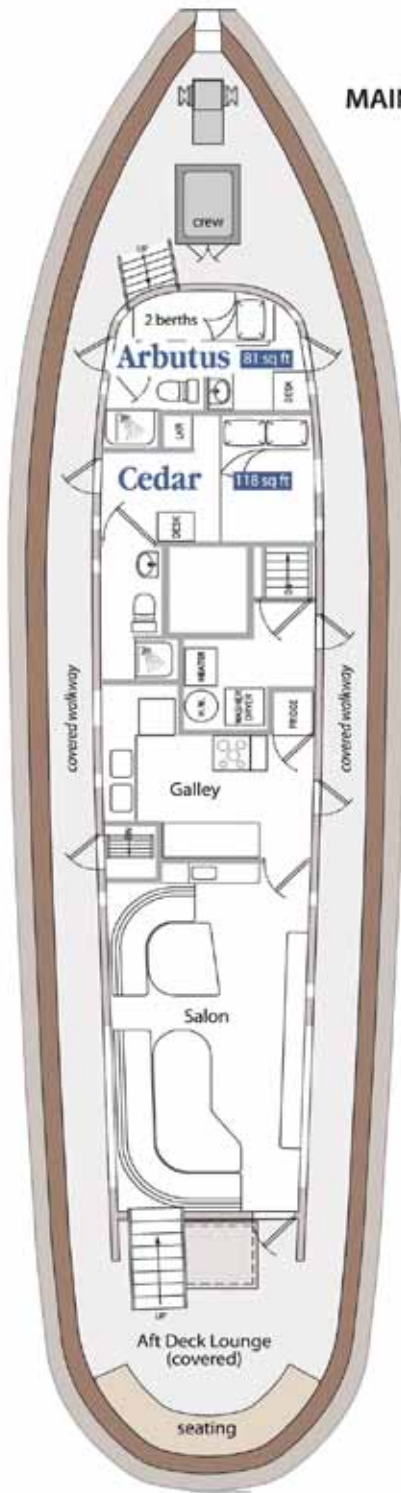
aft deck lounge



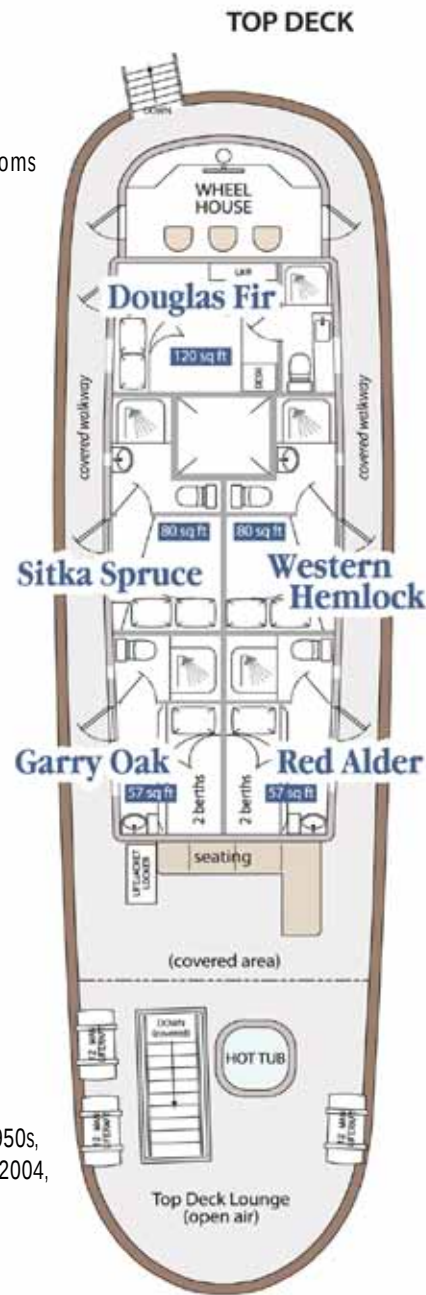
wheelhouse



MV Swell



MAIN DECK



TOP DECK

Private Staterooms: 6
 Private Ensuities: All staterooms
 Max Guests: 10 or 12
 Salon / Lounge Areas: 4
 Shore Boats: 2 Kayaks: 2

Length: 80 feet
 Beam (Width): 22 feet
 Propulsion: Diesel engine
 Registration: Canada

Year Built: 1912 (rebuilt: 1950s, 1980s, a \$3.5 million refit in 2004, a green refit in 2015)
 Where Built: Vancouver, BC
 Style of Ship: Tug

Cabin Features



Category 1

Outside door, opening portholes, private ensuite head, storage, natural light. Two up and down small, extra-long single beds (79.5" x 30").

Sink in main area, toilet and shower in head. Storage in tall cupboard with shelves, small under-sink cupboard, under bed. 57 ft²

Garry Oak, Red Alder

*Images are representative of cabin categories.
Some aspects of individual cabins may vary.*



Category 2

Mid-size cabin, outside door, opening portholes, larger private ensuite head, storage, natural light.

Angled boat double beds (approx 79" x 52", narrower at feet). These are comfortable beds for two people who are used to sleeping together and don't mind their feet near each other. Not for people who wish to sleep well separated from their partner. Luxurious for a single paying a single supplement.

3-piece bathroom. Storage in three small drawers, two cubbyholes under bed, and three shelves, plus cupboard in head. 80 ft²

Western Hemlock, Sitka Spruce



Mid-size cabin, outside door, opening portholes, larger private ensuite head, storage, natural light. Two up and down singles (approx 78" x 35"), plus desk and two small cupboards.

Sink in main area, toilet and shower in head. Storage in two small wardrobes, shelf on top of wardrobes, cupboard under sink and inside small desk. 80 ft²

Arbutus

a) Angled Boat Double

b) Two Singles

Category 3

Largest cabins, outside door, opening portholes, large private ensuite head, storage, natural light.

Small boat queen sized bed, which is half-way between a double and a queen (75.5" x 57"). One side of bed is against the wall.

3-piece bathroom. Storage in tall, slim cupboard, various drawers, one shelf and small entry shelf. 120 ft²

Cedar, Douglas Fir

Prices are per person. Single supplement for Category 1 and some Category 2 cabins, when available: 50%



