



# Gulf Islands, B.C.

On *MV Swell*

*A Frommer's "Trip of a Lifetime"*



*Some people who visit the Gulf Islands think they've stumbled into Paradise.*

*This group of hundreds of semi-mediterranean islands in a protected sea has drawn people for millennia, with its green and gold slopes, blue ocean and ring of snow-capped peaks.*

## Islands in the Salish Sea

Step aboard one of our classic ships and enter a world where the most important decision is which place to explore next.

With 200+ islands and islets, some with "dry rain-forests", some with white shell beaches, some with colonies of animals, the options are many.

Maple Leaf's crew knows the area well and while you'll visit some of the larger, well-known islands, you'll also be guided to little-known havens to which most people will never have access. (Ever heard of Cabbage Island? How about Mandarte, Prevost and Wallace?)

The Gulf Islands offer a combination of unique wilderness and eclectic communities. On land, Garry oaks and Douglas fir forests, wildflower meadows and Arbutus (madrone) trees flourish. You'll explore rocky beaches, quiet lagoons and spectacular passages. The islands lie in a rain shadow, so some even support small cacti. Our onboard naturalist unlocks the wonder of even the smallest shells you may find.

## Sea Life & Sailing

Fresh spring and fall breezes make for great sailing, and we often get generous portions of sunshine. A stunning variety of sea life is found here - brightly-coloured sea stars, crabs, clams and seaweeds. Seals, otters, dolphins and whales swim the waters between islands.

These trips are a great opportunity to experience the relaxing pace of life aboard a classic ship. In the quiet beauty of these islands, you will feel as if you are thousands of miles from anywhere.

## Coast Salish First Nations Culture

The Coast Salish culture has flourished for thousands of years here, and it's easy to see why. The climate is mild, the land is gentle, and natural beauty abounds. Often we are able to meet with elders who can share the original names of the islands, and the way of life here, with our guests.

## Explorers and Eclectic Villages

The islands are as diverse as they are beautiful. Most reflect the history of maritime exploration on the Pacific Coast and many, such as Galiano and Valdez, still bear the names of the earliest European explorers.

The natural meadows lured European and Hawaiian settlers to farm here, and later, American draft dodgers and hippies of all kinds came to the islands to escape urban life. Crafts and arts thrive, and the Gulf Islands are now one of the most desirable places to live in Canada. Sit back on deck and explore these idyllic islands. You'll see why they are known as one of the world's best cruising destinations.



© Maple Leaf Adventures. All rights reserved. Printed on recycled, post-consumer paper.

Photo credits: Kevin Smith, Maureen Gordon (dolphin)



# Gulf Islands, B.C.

*"Thank you for the privilege of being aboard this beautiful ship, experiencing the magical beauty of the islands."*

*- Elspeth McVeigh,  
Vancouver, B.C. & United Kingdom*

## 2017 Dates & Prices - Swell

Spring in the Gulf Islands  
April 20-24  
4 nights, 5 days  
Price: Cdn \$2709 (category 1), \$3021 (category 2), \$3472 (category 3)  
Depart & return: Sidney, BC

Vancouver Island's Inside Passage  
April 25 - May 2  
7 nights, 8 days  
Price: Cdn \$2995 (category 1), \$3323 (category 2), \$3724 (category 3)  
Depart: Sidney, BC  
Return: Port McNeill, BC

See Vancouver Island Brochure for sample itinerary.

Craft Beer & Culinary Cruise  
Oct 27-31  
4 nights, 5 days  
Price: Cdn \$2790 (category 1), \$3112 (category 2), \$3576 (category 3)  
Depart & return: Sidney, BC



Maple Leaf Adventures  
PO Box 8845, Stn. Central,  
Victoria, B.C., V8W 3Z1 Canada

toll free 1-888-599-5323  
local 1-250-386-7245



## Spring Fling in the Gulf Islands

There is no better way to celebrate the return of spring than sailing among these eclectic islands in south-western British Columbia.

While the rest of the North is still clothed in a blanket of winter, the Gulf Islands burst with life - from the green flames of new growth to meadows of bright flowers and the exuberant, noisy clamour of seals, whales and birds flocking around fish and krill in the springtime ocean.

Meadows are carpeted with wild flowers...white Easter lilies, pink sea blush, purple camas, Blue-eyed Mary. All shine against an early spring-green palette.

## Autumn in the Gulf Islands

Autumn, a time of feasting, comes slowly to the Gulf Islands. But as we drift past the shores, leaves on oaks, dogwood and broadleaf maples will be starting to turn to fall colours. The arbutus splash the coastal woodlands with bunches of ripe, red berries.

Migrating birds stop on the beaches on their journey south along the Pacific Flyway. Spawning salmon congregate among the islands before running up the mighty Fraser River, and marine mammals including seals, sea lions and orcas feast on the fish.



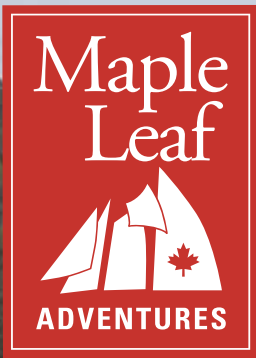
## Sample Itinerary - Gulf Islands

Note that, as with all expedition cruises, itineraries vary depending on the interests of guests, and actions of weather and wildlife. This sample itinerary is meant to give you an idea of the typical trip.

- Day 1 Orientation, cruising. Seabird island visit, wildlife watching, porpioses. Anchorage Saturna Island.
- Day 2 Morning hike on Saturna Island, forest ecology. Spectacular views and picnic. Cruising some of the most productive nwaters of the southern islands. Anchorage and beachcombing, early farm history exploration. Sea lion and seabird haul out.
- Day 3 Village visit, sailing in Georgia Strait and one of many channels in the area. Anchorage Prevost Island. Exploring the intertidal life at low tide. Hike to view and mariner's light.
- Day 4 Cruising to either Wallace Island, Penelakut Island or other central Island. Historic and First Nations history. Wildflower meadows or mushroom, fall foliage highlights. Cruising to Russell Island. Optional kayak.
- Day 5 Morning woodland shore walk. Kanaka history- Cruising to Sidney.

*For Vancouver Island trip, see the Vancouver Island brochure; for the craft beer trip, see the Tall Sails and Ales brochure.*





# MV Swell



dining salon

## A classic tug refit into an expedition yacht

The Swell is an authentic, coastal tugboat. Her small size and ruggedness, combined with our special access permits and knowledgeable and well-connected crew, give you an unparalleled experience.

You have access to sites, phenomena and people you cannot get on larger ships, which are often banned from the special areas we take you. What's more, you have a full ship for just you and a few other guests. The cabins are beautifully and lovingly decorated, but they are not hotel rooms. They are authentic, small boat cabins. This means the beds are non-standard sizes but are comfortable. There are door sills to step over to enter each cabin. This does mean that you need to step aboard without thinking of cabins as hotel rooms, but rather as cozy cabins on a real heritage ship.



galley



top deck lounge w/ hot tub



aft deck lounge

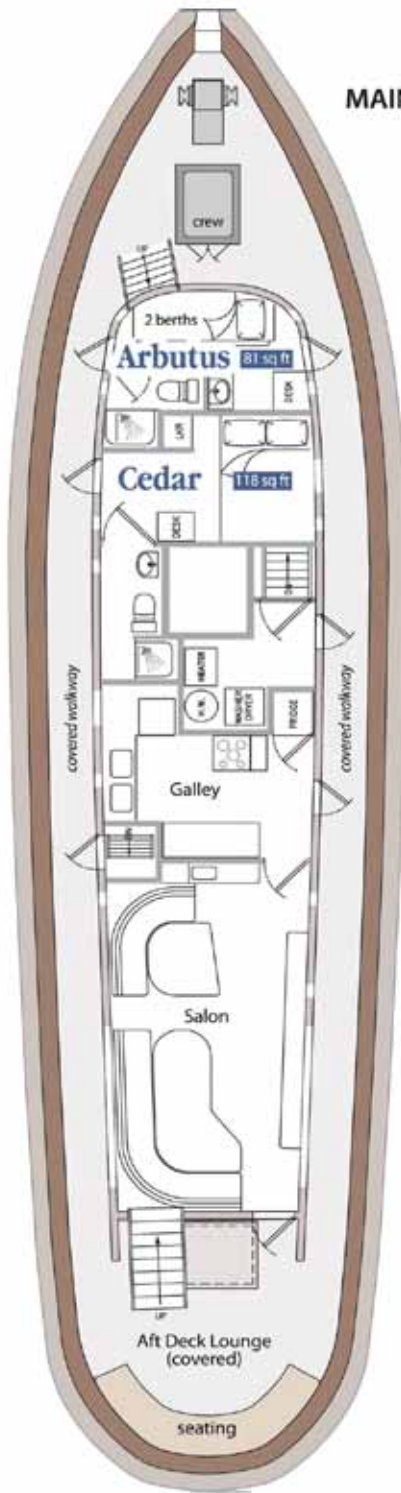


wheelhouse

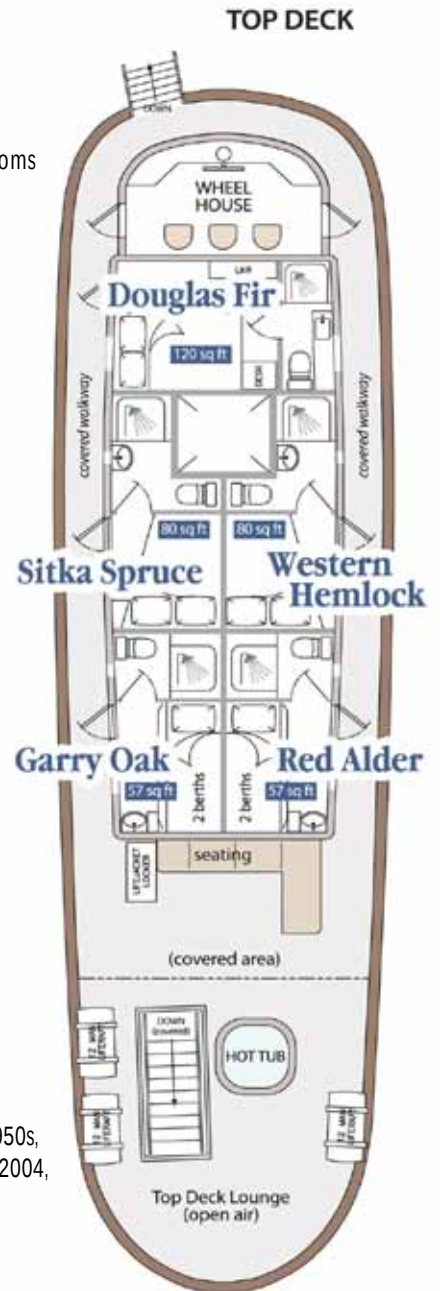




# MV Swell



## MAIN DECK



## TOP DECK

Private Staterooms: 6  
 Private Ensuities: All staterooms  
 Max Guests: 10 or 12  
 Salon / Lounge Areas: 4  
 Shore Boats: 2 Kayaks: 2

Length: 80 feet  
 Beam (Width): 22 feet  
 Propulsion: Diesel engine  
 Registration: Canada

Year Built: 1912 (rebuilt: 1950s, 1980s, a \$3.5 million refit in 2004, a green refit in 2015)  
 Where Built: Vancouver, BC  
 Style of Ship: Tug



# Cabin Features



## Category 1

Outside door, opening portholes, private ensuite head, storage, natural light. Two up and down small, extra-long single beds (79.5" x 30").

Sink in main area, toilet and shower in head. Storage in tall cupboard with shelves, small under-sink cupboard, under bed. 57 ft<sup>2</sup>

*Garry Oak, Red Alder*

*Images are representative of cabin categories.  
Some aspects of individual cabins may vary.*



## Category 2

Mid-size cabin, outside door, opening portholes, larger private ensuite head, storage, natural light.

Angled boat double beds (approx 79" x 52", narrower at feet). These are comfortable beds for two people who are used to sleeping together and don't mind their feet near each other. Not for people who wish to sleep well separated from their partner. Luxurious for a single paying a single supplement.

3-piece bathroom. Storage in three small drawers, two cubbyholes under bed, and three shelves, plus cupboard in head. 80 ft<sup>2</sup>

*Western Hemlock, Sitka Spruce*

a) Angled Boat Double



Mid-size cabin, outside door, opening portholes, larger private ensuite head, storage, natural light. Two up and down singles (approx 78" x 35"), plus desk and two small cupboards.

Sink in main area, toilet and shower in head. Storage in two small wardrobes, shelf on top of wardrobes, cupboard under sink and inside small desk. 80 ft<sup>2</sup>

*Arbutus*

b) Two Singles

## Category 3

Largest cabins, outside door, opening portholes, large private ensuite head, storage, natural light.

Small boat queen sized bed, which is half-way between a double and a queen (75.5" x 57"). One side of bed is against the wall.

3-piece bathroom. Storage in tall, slim cupboard, various drawers, one shelf and small entry shelf. 120 ft<sup>2</sup>

*Cedar, Douglas Fir*

*Prices are per person. Single supplement for Category 1 and some Category 2 cabins, when available: 50%*











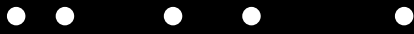












• •  
••  
•• • - •  
€ ”  
,  
‰

† ‡ ^ •  
š • - • - •  
i • • i-ž «®»  
† • œ  
) f œ œ œ œ f ž Ÿ Ÿ f ž i φ i  
• € • «-| °€•

” € €  
, •• •  
• • • § •  
φ • § • • •  
§ , •€• • •  
§ ¥ • • •  
•€• • •  
• • • ©€• • • •  
¥  
•€• • •  
••  
£ •  
ž • • •  
• • •  
• • •

€ €  
ž \_\_\_\_\_  
•  
~ \_\_\_\_\_  
TM ,  
•

f † € ”  
ž • • ž  
• • ¥  
• • •  
• • •  
ž †  
• • •  
- § ž • • ‰ • •  
• • •  
•• ‰ †  
, • • ž •  
• • •  
ž • • • i • † •  
‰ • • ž ^  
• • • ‰ •