



# Whales & Totems

On MV Swell

Of the Southern Great Bear Rainforest

A Frommer's "Trip of a Lifetime"



*"Some nights I hear whales in my dreams.*

*Some nights I wake...and find it hasn't been a dream at all."*

– Alexandra Morton,  
Listening to Whales  
(in the Great Bear Rainforest)

This is the "Serengeti of the sea": rich in wildlife, home to a complex whale community, addictive cruising and ancient human cultures. It is the best place on earth to see killer whales and humpback whales. The 200+ islands of the Broughton Archipelago have been frequented for millennia by three communities of killer whales (salmon eaters, mammal eaters and offshore whales). This rich place is also abundant in humpback whales, porpoises, Pacific white-sided dolphins, seals, sea lions and seabirds. It has also been the longtime home of the Kwakwaka'wakw peoples, and a colourful, more recent frontier culture.

## Islands of Natural Bounty

On this expedition cruise, you'll explore the island world, where people live in houses that float on water, where it's possible to listen to whale song as you dine, and where white beaches

turn out to be the shell middens from thousands of years of human habitation.

In the forests grow ancient cedars, and in the shallow water constellations of colourful sea stars and other intertidal life flourish. (We may even catch some of the succulent crabs for dinner.)

As you explore the area, our expert naturalist will help you learn about all you see, and even identify for you individual whales. Our crew have local knowledge of the area and strong relationships with scientists.

## Killer Whales, Humpback Whales, Dolphins, Bears & More

This is the seasonal home to killer whales known as the Northern Residents. Here, they socialize and fish salmon. You can stand on deck and watch the whales deftly catch fish or sometimes raise their heads out of the water to look at you.

Keenly intelligent, killer whales have a complex, matriarchal society. Pacific white-sided dolphins and Dall's porpoises gather here, often streaking across a channel to play in our wake. Humpback whales are making a spectacular comeback as well, with more arriving each year. These whales feed on the abundant schooling fish and perform a unique foraging behavior known only to occur in this area.

Thousands of seabirds – common murre, mergansers, harlequin ducks, scoters, cormorants and scores of eagles – abound. Seals and sea lions also share in the bounty of the area. Occasionally we'll see a grizzly or black bear fishing or eating beach crabs.





# Whales & Totems of the Southern Great Bear Rainforest



## Human Cultures

This trip is rich in variety and colourful villages. At Alert Bay, home to one of the most impressive First Nations cultural centers on the coast, you'll learn from local residents the stories of the Kwakwaka'wakw speaking peoples, see their world-renowned art and enter the world of the potlatch with a special guided tour.

At Village Island, explore an ancient village site, where original carved poles and house posts still rest.

At Telegraph Cove, a turn-of-the-century hamlet of wooden homes on a boardwalk, you can see the whale museum. Some trips visit orca researchers on a remote island, some visit a remote floating community.

## A Classic, Coastal Ship

The Swell is a beloved coastal ship that, for over 100 years, has plied these waters -- as a towboat for 92 years and then as a passenger carrying vessel. As well as being a piece of coastal history, Swell is a well-engineered, beautiful ship -- a work of functional art.



## Sample Itinerary

As with all expedition cruises, itineraries vary depending on the interests of the guests, and the actions of weather and wildlife. This sample itinerary is to give you an idea of the typical trip.

- Day 1 Board the ship, orientation, sailing. Humpback whale & porpoise viewing. Optional evening kayak.
- Day 2 Whale watching for hours. Lunch in the company of whales. Afternoon forest interpretive walk, intertidal life exploration.
- Day 3 Cruising mainland fjord, river estuary walk, search for bears. Optional kayak, zodiac ride.
- Day 4 Humpback whale viewing. Shore walk and intertidal life viewing. Visit remote Echo Bay float house community and Billy Proctor's Museum. Guided tour at UMista Cultural Centre, Alert Bay.
- Day 5 Whale watching or dolphins, cruising to Port McNeill.



"I recall the beautiful and awesome solitude of the area you took us through; the wonder of seeing the whales as well as the myriad other creatures we encountered; the unspoiled wilderness around us; and the peaceful, gentle rocking of the ship as we slept. The entire trip, even a year after the fact, was totally awesome!"

- *Syd Young, Provo, Utah*

## 2017 Dates & Prices - Swell

October 14 - 18

4 nights, 5 days

Price: Cdn \$3417 (category 1), \$3758 (category 2), \$4130 (category 3)

Depart & return: Port McNeill, B.C.

See also the Whales & Vancouver Island inside passage trip brochure, Oct 19-26 from Port McNeill to Sidney.

for cabin category descriptions please refer to the Swell ship page enclosed

## Maple Leaf Adventures

PO Box 8845, Stn. Central,  
Victoria, B.C., V8W 3Z1 Canada

toll free 1-888-599-5323

local 1-250-386-7245





# MV Swell



dining salon

## A classic tug refit into an expedition yacht

The Swell is an authentic, coastal tugboat. Her small size and ruggedness, combined with our special access permits and knowledgeable and well-connected crew, give you an unparalleled experience.

You have access to sites, phenomena and people you cannot get on larger ships, which are often banned from the special areas we take you. What's more, you have a full ship for just you and a few other guests. The cabins are beautifully and lovingly decorated, but they are not hotel rooms. They are authentic, small boat cabins. This means the beds are non-standard sizes but are comfortable. There are door sills to step over to enter each cabin. This does mean that you need to step aboard without thinking of cabins as hotel rooms, but rather as cozy cabins on a real heritage ship.



galley



top deck lounge w/ hot tub



aft deck lounge

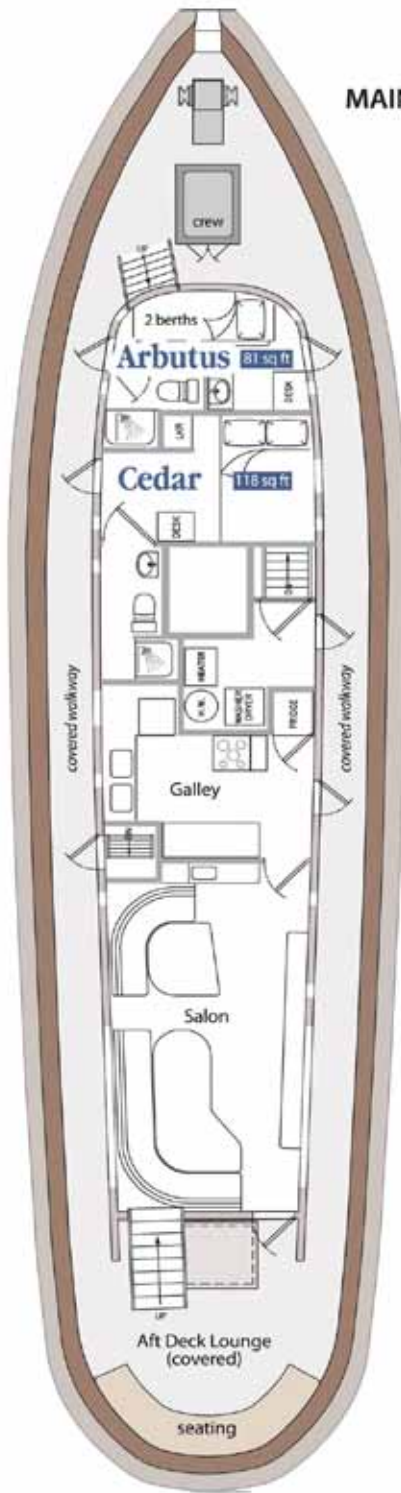


wheelhouse

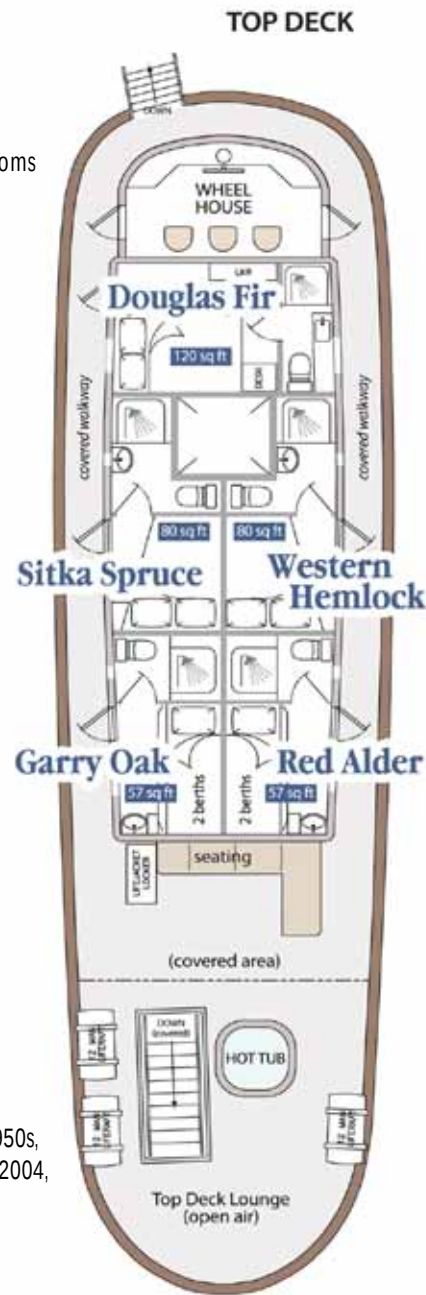




# MV Swell



## MAIN DECK



## TOP DECK

Private Staterooms: 6  
 Private Ensuities: All staterooms  
 Max Guests: 10 or 12  
 Salon / Lounge Areas: 4  
 Shore Boats: 2 Kayaks: 2

Length: 80 feet  
 Beam (Width): 22 feet  
 Propulsion: Diesel engine  
 Registration: Canada

Year Built: 1912 (rebuilt: 1950s, 1980s, a \$3.5 million refit in 2004, a green refit in 2015)  
 Where Built: Vancouver, BC  
 Style of Ship: Tug



# Cabin Features



## Category 1

Outside door, opening portholes, private ensuite head, storage, natural light. Two up and down small, extra-long single beds (79.5" x 30").

Sink in main area, toilet and shower in head. Storage in tall cupboard with shelves, small under-sink cupboard, under bed. 57 ft<sup>2</sup>

*Garry Oak, Red Alder*

*Images are representative of cabin categories.  
Some aspects of individual cabins may vary.*



## Category 2

Mid-size cabin, outside door, opening portholes, larger private ensuite head, storage, natural light.

Angled boat double beds (approx 79" x 52", narrower at feet). These are comfortable beds for two people who are used to sleeping together and don't mind their feet near each other. Not for people who wish to sleep well separated from their partner. Luxurious for a single paying a single supplement.

3-piece bathroom. Storage in three small drawers, two cubbyholes under bed, and three shelves, plus cupboard in head. 80 ft<sup>2</sup>

*Western Hemlock, Sitka Spruce*

a) Angled Boat Double



Mid-size cabin, outside door, opening portholes, larger private ensuite head, storage, natural light. Two up and down singles (approx 78" x 35"), plus desk and two small cupboards.

Sink in main area, toilet and shower in head. Storage in two small wardrobes, shelf on top of wardrobes, cupboard under sink and inside small desk. 80 ft<sup>2</sup>

*Arbutus*

b) Two Singles

## Category 3

Largest cabins, outside door, opening portholes, large private ensuite head, storage, natural light.

Small boat queen sized bed, which is half-way between a double and a queen (75.5" x 57"). One side of bed is against the wall.

3-piece bathroom. Storage in tall, slim cupboard, various drawers, one shelf and small entry shelf. 120 ft<sup>2</sup>

*Cedar, Douglas Fir*

*Prices are per person. Single supplement for Category 1 and some Category 2 cabins, when available: 50%*





















