



CANADIAN GEOGRAPHIC AND MAPLE LEAF ADVENTURES PRESENT

SALISH SEA SPRING EXPEDITION: 150 YEARS OF CANADA + 15,000 YEARS OF HUMANS & NATURE



CANADIAN
Geographic

THE ROYAL
CANADIAN
GEOGRAPHICAL
SOCIETY



LA SOCIÉTÉ
GÉOGRAPHIQUE
ROYALE DU
CANADA

Maple
Leaf

ADVENTURES

Photos: Greg Sbea, The Hover Collective (top)



Florence James



Capt. Kevin Smith



John Geiger, RCGS



Maple Leaf Adventures

PO Box 8845, Stn. Central,
Victoria, B.C., V8W 3Z1 Canada

toll free 1-888-599-5323
local 1-250-386-7245

www.MapleLeafAdventures.com



Dear friends,

It is with great pleasure that we are designing this trip with *Canadian Geographic*, the Royal Canadian Geographical Society, and local educators.

The Society's motto is to "make Canada better known to Canadians." It's something we appreciate here on the west coast of Canada.

Much of our coastline is rugged. It's remote from urban centres, and remains little known. Even parts of the Salish Sea region, like the Gulf Islands where we'll travel, are little-known outside a few larger islands settled by people of European descent.

But here, in a protected inland sea, is a diverse archipelago full of ancient landscapes and cycles of life that continue millenia after millenia.

The region is being nominated as a UNESCO World Heritage site -- and for good reason.

So many aspects of geographical study converge here. The physical geography of mountains, valleys, bluffs and erratics tell the story of some of Earth's great natural forces.

The region also contains layers of human geog-

raphy, from as-yet-undiscovered ancient settlements, to at least 5,000 years of Coast Salish peoples, to more recent interactions with European explorers and traders, homesteaders and finally an eclectic mix of farmers, hippies, retirees and Canada's greatest density of artists and artisans.

The environment is one of Canada's most endangered and diverse, with important wildlife and plant communities that range from prickly pear cactus to exquisite orchids to towering ancient cedars. It contains key gathering places for marine mammals and seabirds, as well as a plethora of other animal life. Early spring is the richest time to visit.

As we celebrate Canada's 150th anniversary, we invite you to explore this rich region where Canada's Pacific history began, though interactions with cultures that have been here for millenia.

We look forward to welcoming you aboard.

Capt. Kevin Smith
President, Maple Leaf Adventures



Cruise from island to island, in the land where Canada's Pacific history began. You'll be off the beaten track, in the height of spring. Explore why the Salish Sea region is receiving international acclaim for its geographical complexity, biological diversity and ancient cultural history.



Discover the Natural & Cultural Wonders of the Salish Sea Region

Kick off Canada's 150th birthday with an odyssey through the Salish Sea's history and natural wonders, in the place where Canada's Pacific history began.

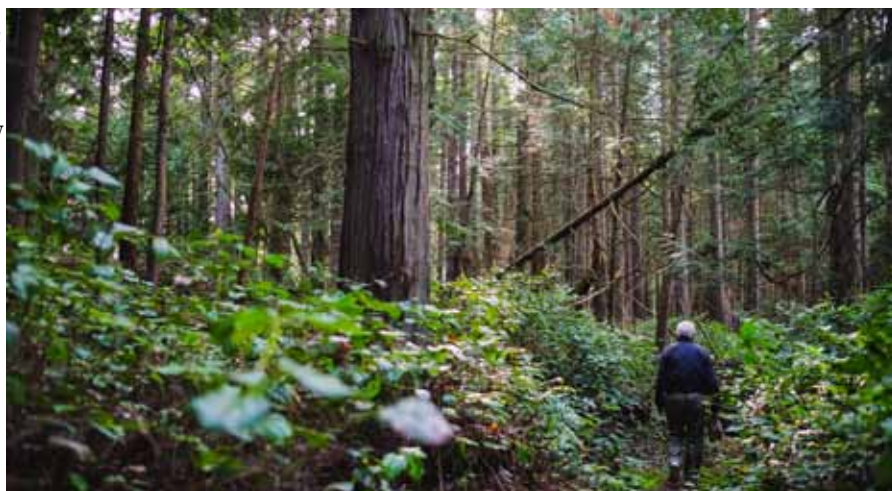
On this special trip with the Royal Canadian Geographical Society, you'll explore this cross-boundary region that is gaining international attention. On a 5-day expedition cruise, you'll visit remote, natural and historic islands that are off the ferry routes, that most never get a chance to see. You'll learn of Canada's history in the region, as well as the history that's existed far longer, the Coast Salish history, as well as the diverse natural history.

Here, snow-capped mountains in southern British Columbia and Washington State ring an inland sea, full of intricate waterways among hundreds of warm islands.

Your guides will be naturalists and historians, including Penelakut elder Florence James.

Trip Highlights

- A small group of between 8 and 20 guests max.
- 5 days with Penelakut elder, storyteller and fluent speaker of Hul'q'umi'num' as your personal guide.
- Presentations and one-on-one conversations with experts in Canada's history and in natural history.
- Spring wildlife including marine mammals and migrating seabirds, and natural beauty including wildflower meadows, fresh green leaves and mild weather.



ows, fresh green leaves and mild weather.

- Visits to historic sites including ancient middens and Canadian settler farmsteads.
- Classic, comfortable expedition ships with an award-winning, local company.

Trip Activities

Moderate walking, beachcombing, zodiac rides, wildlife viewing, natural history, cultural site visits, mapping, cruising by small ship. Optional: kayaking.

Natural Wonders

The islands in the Salish Sea have been carved by glaciers, leaving points of rippled sandstone and valleys below steep granite bluffs. The geographical variety is immense: park-like garry oak meadows, sublime bluffs with red-barked arbutus clinging to them, sandy beaches, wetlands rich in songbirds, ancient rainforest, reefs and rocks where birds and sea lions congregate, and gently sloping shell midden beaches created from centuries of human habitation.

In the protected waterways, tidal currents rush between reefs and islands to stir up nutrients, creating food for abundant sea life -- krill, fish, birds, and marine mammals, to name a few.



Salish Sea, on BC's South Coast



"Thank you for the privilege of being aboard this beautiful ship, experiencing the magical beauty of the islands."

*- Elspeth McVeigh,
Vancouver and United Kingdom*

Maple Leaf Adventures

PO Box 8845, Stn. Central,
Victoria, B.C., V8W 3Z1 Canada

toll free 1-888-599-5323
local 1-250-386-7245



On our small, local ships, you'll explore the beautiful remoter islands and passages that are inaccessible by ferries. You'll arrive by small boat onto beach landings, as people have done for millenia.

Cultural Wonders

The islands' mild Mediterranean climate has supported people for millenia. Archaeological discovery is still ongoing, but footprints found on an island north of the region may be 13,000 years old.

So far, Coast Salish sites studied in the Gulf Islands region date back 5,000 years. You'll learn place names and origin stories which may date back at least to this time with Penelekut elder Florence James, and get insights far deeper than the Gulf Islands of the tourism brochures. One story of the great flood, for example, explains the naming of Chemainus mountain.

You'll also explore the recent history of explorers and settlers of European, Asian and Hawaiian descent in the last few hundred years, including historic farmsteads, and the rich artistic communities that have sprung up in more recent decades.

Benefits of Travelling in April

Spring is a 4-month, richly unfolding symphony in southwestern BC, beginning in February, and April is part of its peak.

We'll enjoy wildflowers blooming on islets (pink sea blush, blue-eyed Mary, chocolate lilies, purple camas, yellow monardella and more), flowers in the shrubs and trees, and the brilliant green flames of new leaves against the forest's inky-green conifers.

We'll see migrating seabirds as well as marine mammals fed by the abundant ocean food web. While some of the places and coves we visit are popular in summertime, in April we'll have them to ourselves. Often it will feel as if we have our own world to explore.





About the Expedition



Dates & Prices

April 20-24, 2018

5 days, 4 nights. Price includes: All accommodations, all meals and snacks, all beverages including wine and beer, all guides, permits, cruising, shore excursions, admission fees, and use of gear on board including (optional) fishing gear and kayaks.

MV Swell C \$3278 (category 1), \$3608 (category 2), \$4086 (category 3)

For stateroom and ship info see later page.

SV Maple Leaf C \$2390

Depart: Victoria, BC

Return: Victoria, BC

A One-of-a-Kind Trip

This trip is designed specifically for supporters of Canadian Geographic and the Royal Canadian Geographical Society.

Here are some of the features that make this trip special:

- Special **lectures, as well as one on one chats, with elder Florence James**, based on her years of training as a storyteller for her people, will give you a unique understanding of the Salish Sea world.
- On each ship, the **number of guests is limited, giving you unparalleled access to our extraordinary interpreters**, and personal attention from our crew/guides.
- The number of ships is limited to two, so you'll feel the **excitement and camaraderie of a true small ship expedition**.
- On our wildlife viewing expeditions, and on our visits to coastal sites or communities, you'll be in a small enough group to maintain an organic experience, rather than one hampered by techniques for managing and controlling crowds of people. The benefit of this is **interesting conversations, and unaffected wildlife**, who are comfortable and continue their regular activities for us to view.
- Your ship is a **beautiful ship with a long history on the BC coast**. It is crewed entirely by Canadians with decades of experience as coastal mariners and guides. They happily share their knowledge and local connections with you.
- A portion of the trip price goes directly to **support the Royal Canadian Geographical Society's programs** for the research, exploration and education of Canada's geographical riches.
- Special **extra experiences, unique to this trip**.

Travelling Aboard Small

Coastal Ships

Although large cruise ships and ferries ply the region, they stick to the main "highway" and a few large islands, and don't explore the many smaller channels, islets and bays that showcase the region's diversity.

On this trip you will benefit from Maple Leaf Adventures' special park permits, which give you access to protected areas.

Each ship is beautiful and strong, and each is unique. Travelling aboard is like having your private expedition with friends. As such, there are plenty of places to sit and enjoy peace and scenery or conversations with crew or other guests. We spend a large portion of every day out of doors -- either aboard the ship or ashore. Therefore the cabins are primarily for sleeping and are not palatial. You are welcomed into the wheelhouse by the navigators.

Depending on the level of interest, this expedition will consist of up to two small ships. If there is more than one ship, the ships will travel frequently as a floatilla, rafting together at anchorages. This allows our special interpreters to share their knowledge with each ship's guests. At points during the cruise, the ships will perform certain activities separately -- based on carrying capacity and permitted numbers ashore in any one area at a time. Interpreters will spend time on both ships.

The Ships: **MV Swell** & **SV Maple Leaf**

See a later page in this brochure for information and photos about the ships.



"All expectations were exceeded, our hopes and dreams fulfilled. The warmth, generosity, fun-filled days will stay with us forever. We feel at one with the wildlife, the wilderness, and our companions, not forgetting the crew."

-Julie & Ernie Bechelli, Australia



Sample Itinerary

Note that our local area expertise and small group gives us the flexibility to vary an itinerary based on the interests of you, our guests, and the actions of weather, wildlife and serendipitous opportunities that may arise. This sample itinerary is meant to give you an idea of the typical trip.

- Day 1 Meet in Victoria and board your ship. Welcome reception, cruising to seabird island for viewing and historic discussion, Russell Island and shore walk with Salish and Kanaka history, and natural history. First night dinner and short lecture.
- Day 2 Cruising spectacular Samsun Narrows, with history of European/Canadian exploration, and coastal First Nations history. Shore trips at Penelakut Island, Valdez Islands, historic sites. Cruising Polier Pass, shore trip at Galiano Island, historic site. Short evening presentation.
- Day 3 Exploring the outer islands on the edge of the 'big sea', Georgia Strait. Marine mammal viewing. Exploring ashore on Cabbage and Tumbo Islands, settler history, historic farmstead, beautiful beach. Optional kayaking.
- Day 4 Exploring Gulf Islands National Park Reserve on the remote south end of Saturna Island. Shore trip includes old farmstead, spectacular vistas, forest ecology, and view of important Boundary Pass and the site of a dispute over the siting of the Canadian border. Cruising to further remote sites in the Gulf Islands National Park Reserve. Evening presentation.
- Day 5 Morning shore walk, optional kayaking, wrap-up and cruising to Sidney, watching for wildlife.

About the Royal Canadian Geographical Society

The Royal Canadian Geographical Society is dedicated to imparting a broader knowledge and deeper appreciation of Canada — its people and places, its natural and cultural heritage and its environmental, social and economic challenges.

The Royal Canadian Geographical Society was founded in 1929 with a mandate "to make Canada better known to Canadians and to the world". This mandate is fulfilled mainly through publication of the Society's magazines, *Canadian Geographic* in English and *géographica* in French, and through geographic education programs, speaker series, research grants and expeditions.

About Florence James

Florence James is an elder and teacher from the Puntlaxutth' nation. She speaks Hul'q'umi'num fluently, and educates younger generations about the language.

When she reached six years of age, growing up on Galiano Island, Florence's elders taught her the stories and teachings of the Ancestors, and raised her to be a storyteller for her people. Her family ingeniously kept her away from residential school, and as a result, she has a great depth of cultural and ecological knowledge.

From origin stories, to the names of places -- islands, points, beaches, mountains, bodies of water -- to teachings about how to live, Florence has much to share. The names she knows are the names that still exist, although they are often hidden by the names on Canadian maps of the Gulf Islands region.

Florence has taught at Vancouver Island University and is involved in programs for restoring traditional cultural and ecological knowledge and practices in the region.



MV Swell

A classic tug refit into an expedition yacht

The Swell is an authentic, coastal tugboat. Her small size and ruggedness, combined with our special access permits and knowledgeable and well-connected crew, give you an unparalleled experience.

You have access to sites, phenomena and people you cannot get on larger ships, which are often banned from the special areas we take you. What's more, you have a full ship for just you and a few other guests. The cabins are beautifully and lovingly decorated, but they are not hotel rooms. They are authentic, small boat cabins. This means the beds are non-standard sizes but are comfortable. There are door sills to step over to enter each cabin. This does mean that you need to step aboard without thinking of cabins as hotel rooms, but rather as cozy cabins on a real heritage ship.



dining salon



galley



top deck lounge w/ hot tub



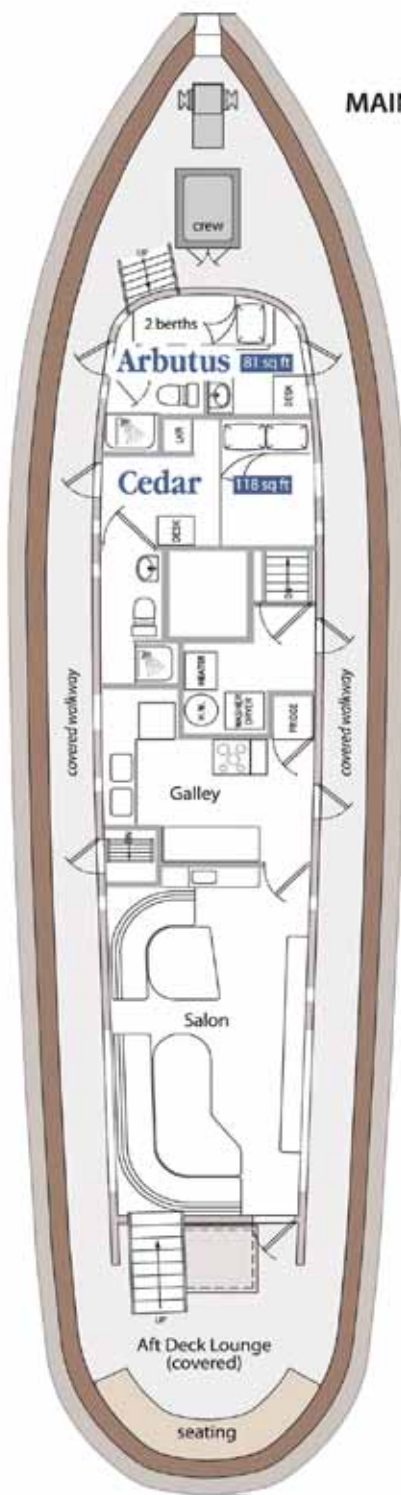
aft deck lounge



wheelhouse

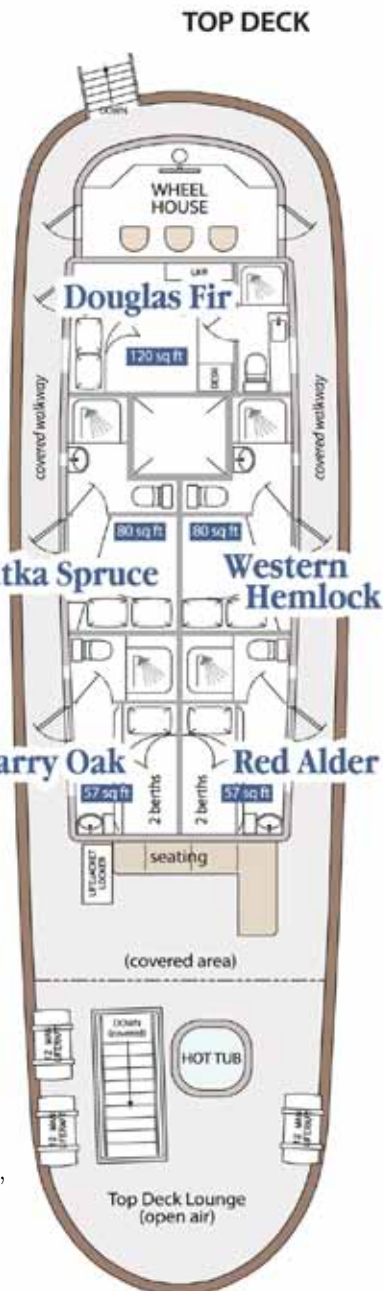


MV Swell



MAIN DECK

Private Staterooms: 6
 Private Ensuites: All staterooms
 Max Guests: 10 or 12
 Salon / Lounge Areas: 4
 Shore Boats: 2 Kayaks: 2



TOP DECK

Length: 80 feet
 Beam (Width): 22 feet
 Propulsion: Diesel engine
 Registration: Canada

Year Built: 1912 (rebuilt: 1950s, 1980s, a \$3.5 million refit in 2004, a green refit in 2015)
 Where Built: Vancouver, BC
 Style of Ship: Tug

Cabin Features



Category 1

Outside door, opening portholes, private ensuite head, storage, natural light. Two up and down small, extra-long single beds (79.5" x 30").

Sink in main area, toilet and shower in head. Storage in tall cupboard with shelves, small under-sink cupboard, under bed. 57 ft²

Garry Oak, Red Alder

*Images are representative of cabin categories.
Some aspects of individual cabins may vary.*



Category 2

Mid-size cabin, outside door, opening portholes, larger private ensuite head, storage, natural light.

Angled boat double beds (approx 79" x 52", narrower at feet). These are comfortable beds for two people who are used to sleeping together and don't mind their feet near each other. Not for people who wish to sleep well separated from their partner. Luxurious for a single paying a single supplement.

3-piece bathroom. Storage in three small drawers, two cubbyholes under bed, and three shelves, plus cupboard in head. 80 ft²

Western Hemlock, Sitka Spruce

a) Angled Boat Double



Mid-size cabin, outside door, opening portholes, larger private ensuite head, storage, natural light. Two up and down singles (approx 78" x 35"), plus desk and two small cupboards.

Sink in main area, toilet and shower in head. Storage in two small wardrobes, shelf on top of wardrobes, cupboard under sink and inside small desk. 80 ft²

Arbutus

b) Two Singles



Category 3

Largest cabins, outside door, opening portholes, large private ensuite head, storage, natural light.

Small boat queen sized bed, which is half-way between a double and a queen (75.5" x 57"). One side of bed is against the wall.

3-piece bathroom. Storage in tall, slim cupboard, various drawers, one shelf and small entry shelf. 120 ft²

Cedar, Douglas Fir

Prices are per person. Single supplement for Category 1 and some Category 2 cabins, when available: 50%



About the Ship



The Ship, SV Maple Leaf

Maple Leaf is a beautiful 92-foot schooner.

The Coast's Beloved, Historic Tall Ship

Built of coastal Douglas fir, high elevation yellow cedar and mahogany, she is a **tough expedition vessel** and a **work of artistry**.

Transport Canada Certified

Maple Leaf is certified by Transport Canada as a passenger carrying vessel. This stringent, world-class designation is the **highest standard of certification for vessels** in Canada (higher than most charter boats, sail training vessels, and fishing vessels, for example).

Comfort and Beauty

Maple Leaf's accommodations are **very comfortable**. Mahogany and fir line the galley, dining salon and wheelhouse. The spacious main cabin is airy and divided by half-walls and heavy curtains into four "cabins," providing sleeping accommodations for eight guests. There are three heads (washrooms) aboard, all with hot running water and shower conversions.

Unparalleled Access to Special Places

Maple Leaf has an **extensive library** and **three decks**. Her **sea-kindly** attributes, **long range**, **sails** and **size** allow you to access extraordinary wilderness areas of the coast most people will never reach.

She is outfitted for engaging with the natural world: rigid hull **inflatable boats** for accessing wildlife colonies and remote beaches, **kayaks**, a **hydrophone** for listening to whales, small temporary tanks for exploring intertidal life, **GoPro underwater cameras**, **presentation screen & more**.

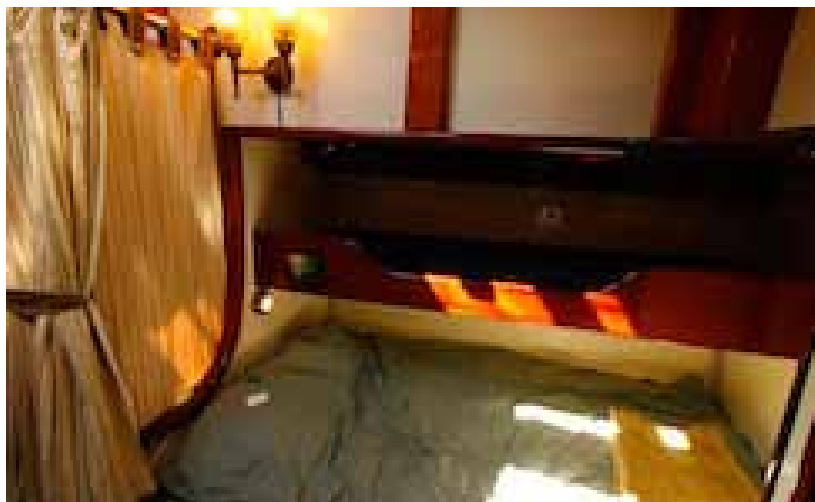


Above: The Maple Leaf's wheelhouse lounge.



Right: One of the many on-deck seating areas, this one along the aft rail of the ship.

About the Ship



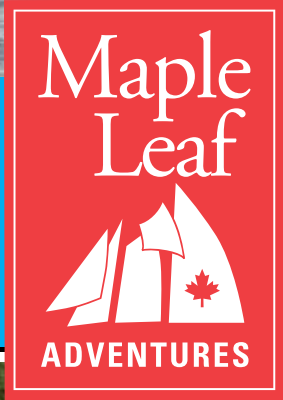
Top: A detail from the wheelhouse at night.

Middle left: The dining lounge.

Middle right: A snack served on deck.

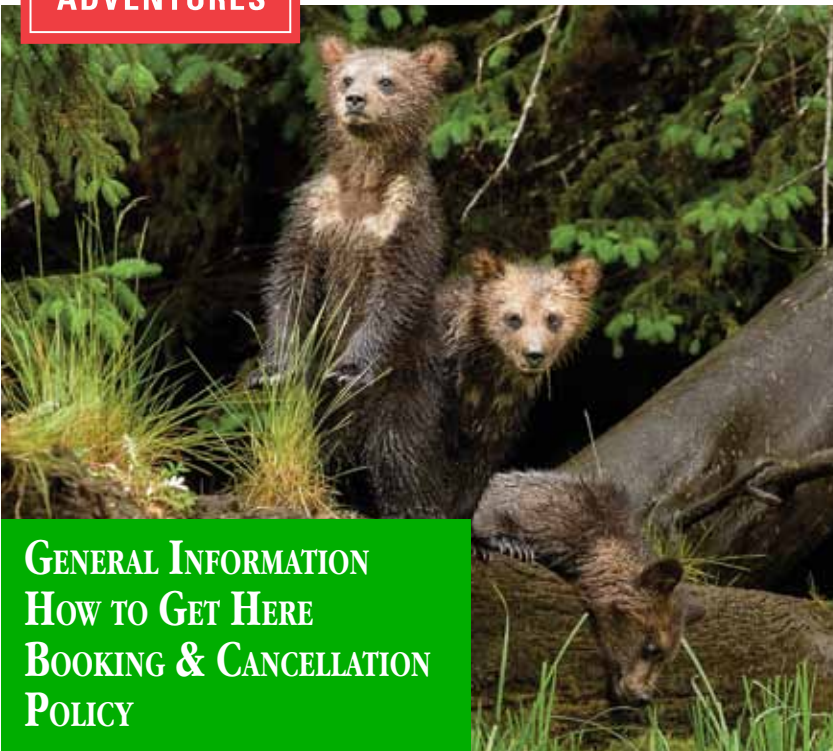
Bottom left: One of the sleeping cabins.

Bottom right: One of the heads (bathrooms)



BOUTIQUE EXPEDITIONS BY CLASSIC SHIP

ALASKA | GREAT BEAR RAINFOREST | GULF ISLANDS | HAIDA GWAII | VANCOUVER ISLAND



GENERAL INFORMATION
HOW TO GET HERE
BOOKING & CANCELLATION
POLICY





The Trips

Since 1986, trips with Maple Leaf Adventures have been described by guests and international media as the “Trip of a Lifetime”.

Join us and discover the amazing natural wonders of the British Columbia and southeast Alaska coast. Your 5-day to 11-day tour explores this vast paradise of 50,000 islands and 40,000 km of shoreline.

You will travel in the spirit of adventure, aboard authentic, classic coastal ships. Unlike big or pocket cruise ships, these nimble, 8 or 12-passenger boats are a historic part of this coast. They give you the most exclusive access to remote areas and wildlife, while also providing an all-coastal, expert crew, and the luxuries of the good things in life, such as meals prepared by a chef, beautiful surroundings, great companions, and warm comfort.





Photos: Kevin Smith

All-Inclusive Highlights

- All accommodations included in your trip, including comfortable, classic ship-board accommodations with fluffy duvets, and local lodges if your trip includes a lodge stay.
- All shore trips, wildlife viewing, and zodiac excursions guided by our expert, knowledgeable crew/guides. All cultural site visits, and all additional local guides.
- All meals and snacks, prepared freshly for you by our chef. Meals feature great variety, and highlight local, fresh specialties.
- All beverages including coffee, tea, juices and sodas, filtered water, wine and craft beer.
- The services of our naturalist and crew both aboard the ship and ashore. These caring, entertaining and knowledgeable people are your hosts for the trip, always available for questions, teaching, or conversation.
- Open wheelhouse. You are welcome to come into the ship's wheelhouse, from which our crew are navigating the ship. On our sailing ships, you are also welcome to take the helm under our crew's guidance, and help sail the ships, if you like.
- Use of gear on board including kayaks, fishing gear, and rubber boots.

Why travelling by water leads you to the best of the Inside Passage and Haida Gwaii

The coastline of British Columbia and Alaska undulates into bays, twists into island archipelagos, and stretches far down fjords that slice through mountain ranges. This is wild geography and there are few roads here. As a result, wildlife and nature thrive. The few coastal communities have a deep connection to the ocean. To experience it at all, and to reach the richest areas, you must travel by water, as people have done here for millennia. On our small ships, you'll reach special areas closed to big ships, and head down passages and make landings there that big ship passengers can only dream of.

By Travelling with Maple Leaf, You Support Local, Conservation-Based Enterprises

By travelling with Maple Leaf, you are part of the important, emerging conservation-based economy on the coast. Our careful, thoughtful approach to our trips, to nature, and to all of the people we visit have earned us a reputation as a model for conservation travel. We are a coast-owned and operated business, and 99% of the money from the trips stays within the coastal economy. We dedicate time and resources to conservation of the coast -- our home that we gladly share with you.



How You'll Travel



Access to the Best Places on the Inside Passage & Haida Gwaii

Maple Leaf Adventures has been awarded special access permits to protected areas, allowing you entrée to worlds most people will never see. Our relationships can also give access to special cultural sites, and scientists in the field.

Our Small Scale: Feel the Coast's Hugeness

The proximity you will feel to the coast's mountains, forest and islands is incomparable with any other form of water travel. Sail with an escort of dolphins. Feel the spray from waterfalls beside us. Walk in ancient forests that are cathedrals of green.

Timed for Peak Wildlife Events, with Plenty of Shore Time

Our trips are timed to coincide with great natural events, ensuring sightings of a fantastic variety of wildlife including bears, whales, dolphins and hundreds of species of birds. There is always lots to do and see. Our shore trips include visits to intertidal areas, beaches, river estuaries, rainforests, and villages. One of the crew is an expert naturalist or fascinating specialist to help you understand the areas we visit.

Gorgeous Classic Ships with Comfortable Finishings

Our ships are beautiful wooden ships, built here, with long histories on the coast. So even as you walk the deck or step into the wheelhouse, you are having a truly coastal experience, connected to more than a century of history.

The Excitement of a Real Journey

Travelling with a small group of guests means that your experience, while carefully planned, is also natural and spontaneous. You will not feel like part of a crowd, and your experience is not limited by barriers and procedures used to manage large groups. Every second, you are on a real journey. We treat each guest as an individual. We notice your interests and help you to do everything you came for. Every Maple Leaf crew member is welcoming and generous - with their time, their knowledge, and their thoughtfulness.

Expert, Local Guides, Crew & Company

Your trips are developed and operated by us -- expert mariners, naturalists, guides and managers who have grown up exploring the coast and who want you to experience the best of the best.

Veterans of local field research, our naturalists share their expertise and abundant knowledge from real experience here. Our relationships on the coast give you access to researchers and local residents to further enrich your trip.

Natural History Exploration Tools

The ships have excellent natural/cultural history libraries, hydrophones for listening to whales underwater, DVDs, small aquariums, fishing gear, GoPro cameras, kayaks, and top-quality shore boats with clean and quiet engines.

Cultural History

Coastal First Nations guides we work with and who share their long history and knowledge of the place with us are from the Gitga'at, Haida, Haisla, Heiltsuk, and Kitasoo-Xai'Xais, nations, and Kwakwaka'wakw of northern Vancouver Island, and Coast Salish of the southern Gulf Islands.

Full But Unhurried Days

Our days are full but our pace is unhurried, giving time to linger with whales, sketch in a Haida village, beachcomb, and walk ancient forests. We go ashore often to experience the entire place, not just the view.

Typical Activities

- Rainforest walks
- Beachcombing
- Exploring by small boat
- Wildlife viewing
- Coastal village visits
- Cultural site visits and experiences
- Photography
- Natural history learning, in all environments, with our naturalist
- Sailing (sailings ships only)
- Kayaking (optional)
- Hiking (optional; possibly one good hike on a trip)
- Cruising
- Fishing (with a licence)
- Foraging (sea asparagus, berries, and other items, some trips only)
- Whale identification for research (on trips with whales)
- Beach campfire and star watching

The Benefits and Approach to Adventure Travel

This is a trip with a true sense of adventure. It's important to realize it's for people with adventurous spirits. The coastal ships are beautiful and comfortable but they are not Las Vegas. If you seek cruise ship amenities, including grand, hotel-room style cabins, this trip may not be for you.

But if you seek to explore in an authentic way, with the camaraderie of expert crew and guides, we look forward to welcoming you aboard.

The Story of Our Company and People

Passionate About Sharing Our Home with You

Maple Leaf Adventures and our trips are run by people who grew up on the islands and coast of the inside passage and Haida Gwaii.

Our lives and perspectives have grown from the rainforest, the beach, the curious gaze of harbour seals, and the channels of blue water that are the pathways of the coast. Our professional lives have honed our skills at hospitality, wildlife guiding, storytelling, navigation, operations, and other aspects of running a world-class company.

As we have come together at Maple Leaf Adventures, we have created a different kind of trip for you, where you can truly experience the best of life on

the coast, as a guest of expert locals and naturalists. Enjoy the friendship of great residents, smell the sweet coniferous forest as you step ashore, feel the rhythm of ship and ocean as you steer under crew's guidance, taste the flavour of huckleberries or freshly caught prawns, and hear a whale's sharp inhalation of breath before it dives.

Our purpose is to give you the best of the coast, while also supporting the conservation of its ecosystems and cultural fabric. Our mission is to show that the best travel delights the mind and senses and can enrich, rather than harm, the places we visit. Care and attention to detail are at the heart of all we do.



Kevin's Story

Kevin Smith, the president of Maple Leaf Adventures, has explored the coast by boat since before he could ride a bike. As a young backcountry and marine park ranger, Kevin witnessed the incredible power and beauty of nature, often alone on his patrol boat. He wanted to share it with others.

Kevin is a geographer by training, and he knows the best experiences are beyond roads' reach. To truly explore the landscapes, wildlife and culture of the coast, you need to go by water. But not in the traditional manner, with thousands of people on a huge cruise ship. He wanted to share the glory of the coast as he had gotten to know it.

He volunteered for five years on the team that

created British Columbia's ground-breaking land use plan, which preserves large tracts of the Great Bear Rainforest. The process pointed out a needed solution in the area: a conservation-based economy. Kevin realized that his vision of sharing the coast's wonders with others would fit. His business acumen, green ethics, expedition knowledge and love of hosting lead him to a new kind of travel: eco-adventure cruising.

Since 2001, Kevin has built Maple Leaf Adventures into an award-winning company. As the leader, he must spend time in the office. But he (as with all Maple Leaf Adventures staff) stays focussed by donning his GoreTex jacket and operating trips each year. It keeps him in touch with the interesting



guests who join us, and the geography, wildlife and people of the coast. After all, that's the dream that brings us - and you - together.

About Our Company

Maple Leaf Adventures has been operating trips focused on the natural history of B.C.'s west coast and Alaska, and the culture of the First Nations peoples of the areas, since 1986. We have a reputation for quality, professionalism and sensitivity to natural and cultural landscapes.

We are the west-coast expedition cruise partner of the Royal Canadian Geographical Society. Our company has been recognized by the Canadian government as a leader in eco-tourism and our trips have been featured internationally in such travel guides as *Frommer's* and *National Geographic Traveler* and on the Oprah Winfrey television show.

We dedicate time and resources to coastal conservation, caring for the coast that gives us our livelihood.



Ocean Wise.  Recommended by the Vancouver Aquarium as an ocean-friendly seafood choice.



Frequently Asked Questions

Q. Is this trip suitable for me?

A. Anyone is eligible so long as they are enthusiastic about participating, amenable to the vagaries of weather, agile enough to clamber in and out of shore vessels in an area where there are no docks, and friendly enough to get along in the relatively close quarters of a yacht. We have had people on board as much as 80 years of age. However, our trips are not suitable for people of failing health or physical disabilities.

Q. What is included in the price?

A. Our price includes all meals, activities and guides throughout your voyage in the region you are visiting. Specifically:

- All meals, snacks and beverages prepared from the freshest ingredients by our superb chef.
- Fine wines featured with the evening meal, and a limited amount of beer included and available throughout the trip. (Liquor is not a large part of our trips, so plan on light consumption).
- Services of our naturalist and professional crew.
- Shore excursions.
- Use of gear on board, including raingear, boots, kayaks and fishing gear (*with fishing licence*).

percentage of the increased costs that go towards sustainable communities add it to the list price as a 'sustainability fee' of \$100 per trip. Through it we hope our guests share in the pride that a trip with Maple Leaf is a contribution to the sustainability of the whole coast – as well as being a great experience.

Q. Can you accommodate my special diet?

A. Yes. If you advise us in the pre-trip forms we can accommodate most dietary requirements.

Q. Will I be seasick?

A. Sea sickness on our North America trips is rarely a problem as your trip is on a sturdy and sea-kindly ship. We travel short distances in protected waters and go ashore often.

Q. Can I be involved in sailing the ship and performing other duties?

A. In North America, absolutely. We encourage our guests to participate in any aspect of the trip that interests them and to a level they are comfortable with. We are patient instructors (no yelling) and delight in helping people learn. On the other hand, you are not required to sail or perform duties while on your vacation. The choice is yours.

Q. What makes you an eco-tourism company?

A. • Our trips have low impact (virtually no impact) on the planet and on the places we visit

- We partner with local people. We have protocol agreements either signed or in process with First Nations in territories we visit.
- Our naturalists – experts in their fields – and other knowledgeable crew members provide a wealth of knowledge on the areas we visit, as do our First Nations guides.

- We work within the regulations of parks and conservation areas, pay the applicable fees and obtain permits for all limited-use areas we visit.
- We dedicate time and resources to preserving the wilderness we travel in.

Q. I've never been on a boat before – is that OK?

A: Yes, absolutely. You will be travelling on a large, strong boat run by an expert crew. You are aboard as our guest and we will look after you very well. You don't have to do anything other than enjoy yourself.

Q. Will I go ashore?

A. Yes – usually a few times a day. Each shore trip is usually between 1 and 3 hours in length.

Q. Do you have kayaks?

A. Yes, and you are welcome to go for paddles in the spectacular bays we anchor in.

Q. How long have you been operating?

A. Since 1986.

Q. How many people are typically on a trip?

A: In North America, max ten guests. We have a crew of 4 or 5 including chef and naturalist.

Q. Is there a single supplement?

A. On the Maple Leaf, there is no single supplement. If the trip fills, you will share with another single person of your own sex. On the Swell there is a 50% single supplement.

Q. What are the other guests like?

A. Our guests are people like you, who are interested in high quality experiences and in learning about the natural world, classic ships or culture. They are thoughtful, fun people and a joy to travel with. A large percentage of them return for additional trips.

How to Get to Your Trip



Airport Access

Our BC and Alaska trips originate from ports along the coast that are serviced by regularly scheduled flights. All of these flights except one originate from Vancouver International Airport, in Vancouver, BC. If you are flying from outside the area, and you are wondering where you need to get to in order to connect to your trip, then Vancouver International Airport is the answer.

Note that if your Alaska trip either starts at or ends at a port in Alaska (e.g., Petersburg), then any air travel to or from Alaska goes via Seattle-Tacoma airport, in Washington State, USA. You can connect to Seattle via a short flight to or from Vancouver, BC.

The map above shows the general flight routes.

We provide all of this information plus more detail and guidance in the Welcome Aboard package that you will receive upon booking your place with Maple Leaf. We are also happy to help any time!

Ferries

Ferries transport passengers between Vancouver and Victoria, Vancouver and Nanaimo, Port Hardy and Prince Rupert, Prince Rupert and Haida Gwaii, Seattle and Victoria, and Alaskan ports and Prince Rupert. Travelling by ferry requires careful planning and sometimes a car.

Driving

If you wish to drive to and/or from your trip, you may be able to. It's best to email or phone us or your travel agent for further information.

Staying Beforehand or Afterward

Our Welcome Aboard packages lists some places you may wish to stay at before or after your trip.

Travel Agent

If you would like the assistance of a travel agent, we are happy to provide contact information for one who has worked with our guests.



Wild BC and Alaska - Boutique expedition cruises



Booking and Cancellation Policy

To avoid disappointment, your reservation should be made early. The number of participants in each program is limited, and the demand is high. Our trips sell out early.

Deposit: A deposit of one third of the price of the trip will reserve your space for any trip.

Balance: The balance is due 120 days prior to departure.

Cancellations: If you are unable to participate and cancellation occurs at least 120 days prior to the departure date of your trip, the full amount of your deposit is refundable, minus a \$200 admin fee per person to cover costs we cannot recover. If cancellation occurs less than 120 days prior to the departure date of your trip, the fare is non-refundable.

Group Bookings

For large group bookings, such as a family charter of the entire ship, the booking and cancellation policy may be different - please contact us for information.

Cancellation Insurance

We highly recommend cancellation insurance, which protects you if you have to make a late cancellation in certain cases (such as a medical emergency). There are several kinds available for different cancellation reasons. Cancellation and any needed medical insurance can be purchased through a travel agent. This should be done at the time your booking is nonrefundable.

Pre-Trip Information Package

We will send you a comprehensive Welcome Aboard package. It includes information on how to get to your trip, what to wear and bring, and other tips for your trip. It also includes an emailed questionnaire and a passenger agreement. There is also a reading list, for those who like to do pre-trip reading.

Full Ship Charters

Charter an entire trip for your family and friends. There are two ways to book -- contact us for details.

Note: Full ship charters require advance planning, as the trips are popular and once a trip has bookings, it can no longer be exclusively yours.

Payment Methods

We accept Visa, Master Card, cheque, money order or bank transfer.

How to Book Your Trip

To book, we welcome your call or email. We complete bookings by telephone.

"Thanks for the best vacation ever."

— Carrie Novick, Oregon.

Contact Us

To book a trip or for help with any questions you may have, we welcome your call or email.

Maple Leaf Adventures

PO Box 8845, Stn. Central,
Victoria, B.C., V8W 3Z1 Canada

info@MapleLeafAdventures.com
toll free 1-888-599-5323
local 1-250-386-7245